

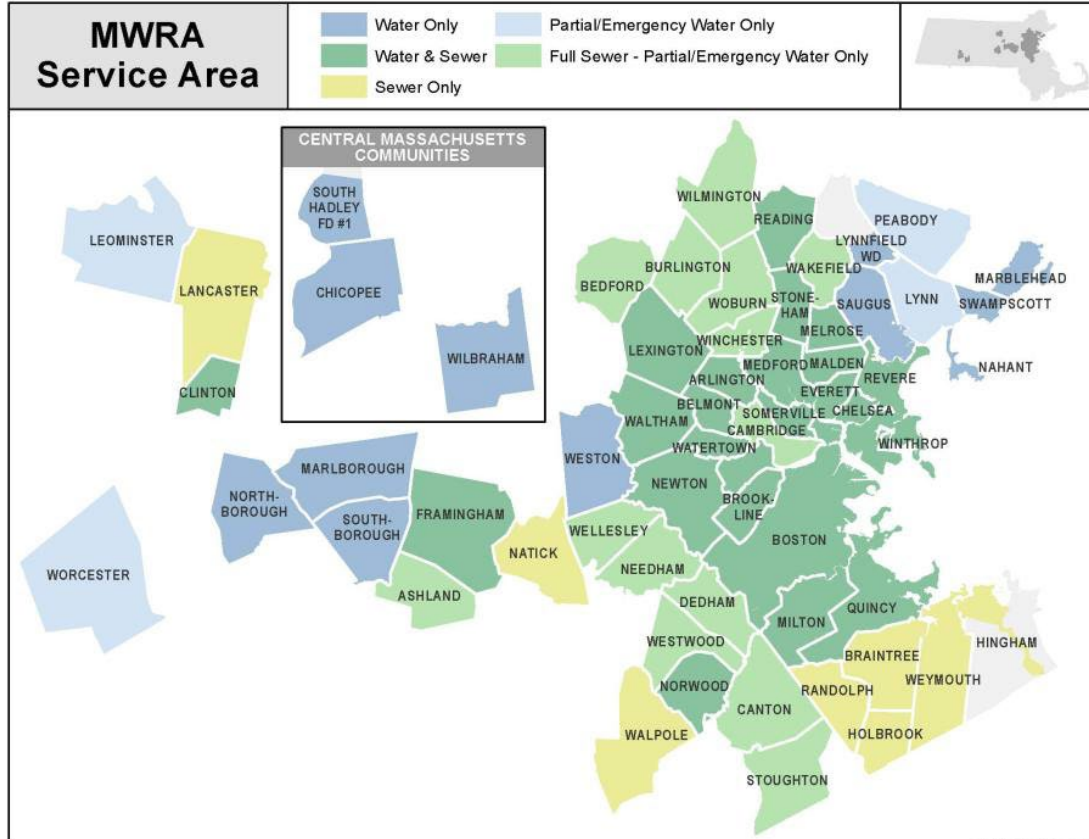


MWRA Wastewater Expansion Update

January 22, 2025



Existing MWRA Service Areas





MWRA Policies for Sewer Connections

- **OP.04, Sewer Connections Serving Property Partially Located in a Non-MWRA Community:** applies to persons seeking MWRA sewer services for buildings and structures partially within and partially outside MWRA's service area. It is also known as the "Sewer Straddle" policy.
- **OP.11, Admission of New Community to MWRA Sewer System and Other Requests for Sewer Service to Locations Outside MWRA Sewer Service Area:** applies to communities seeking admission to the MWRA sewer system and to all parties seeking sewer services for locations outside the MWRA service area.



Recent Wastewater Inquiries

- Assisted Living Facility in Sharon (through Norwood)
- New Multi-Use Development in Sherborn (through Natick)
- Commercial and Industrial Developments in Avon (through Stoughton)
- Industrial Development in Hingham (through Weymouth)
- Town of Hull (discharge directly to DITP)
- Southborough Route 9 corridor (through Framingham)

- South Weymouth Naval Air Station Redevelopment – Weymouth is a current member but significant increase in flow



Wastewater Flow Challenges

- Capacity of collection system and facilities (pump stations, headworks, etc.)
- Combined Sewer Overflows (CSOs) and Sanitary Sewer Overflows (SSOs)
- Treatment capacity and permit limits
- Changing climate conditions
- Need for infiltration/inflow removal



Request of Advisory Board Members

- For new projects outside your community:
 - Assess impacts on community system
 - Bring MWRA into conversation early
- For new communities interested in discharging through your community:
 - Direct them to MWRA – we're not accepting new communities
- For large development/redevelopment projects in your community:
 - Assess impacts on community system
 - Identify I/I projects that could offset increased flows
 - Bring MWRA into conversation early
- Goal is to assure appropriate future system capacity



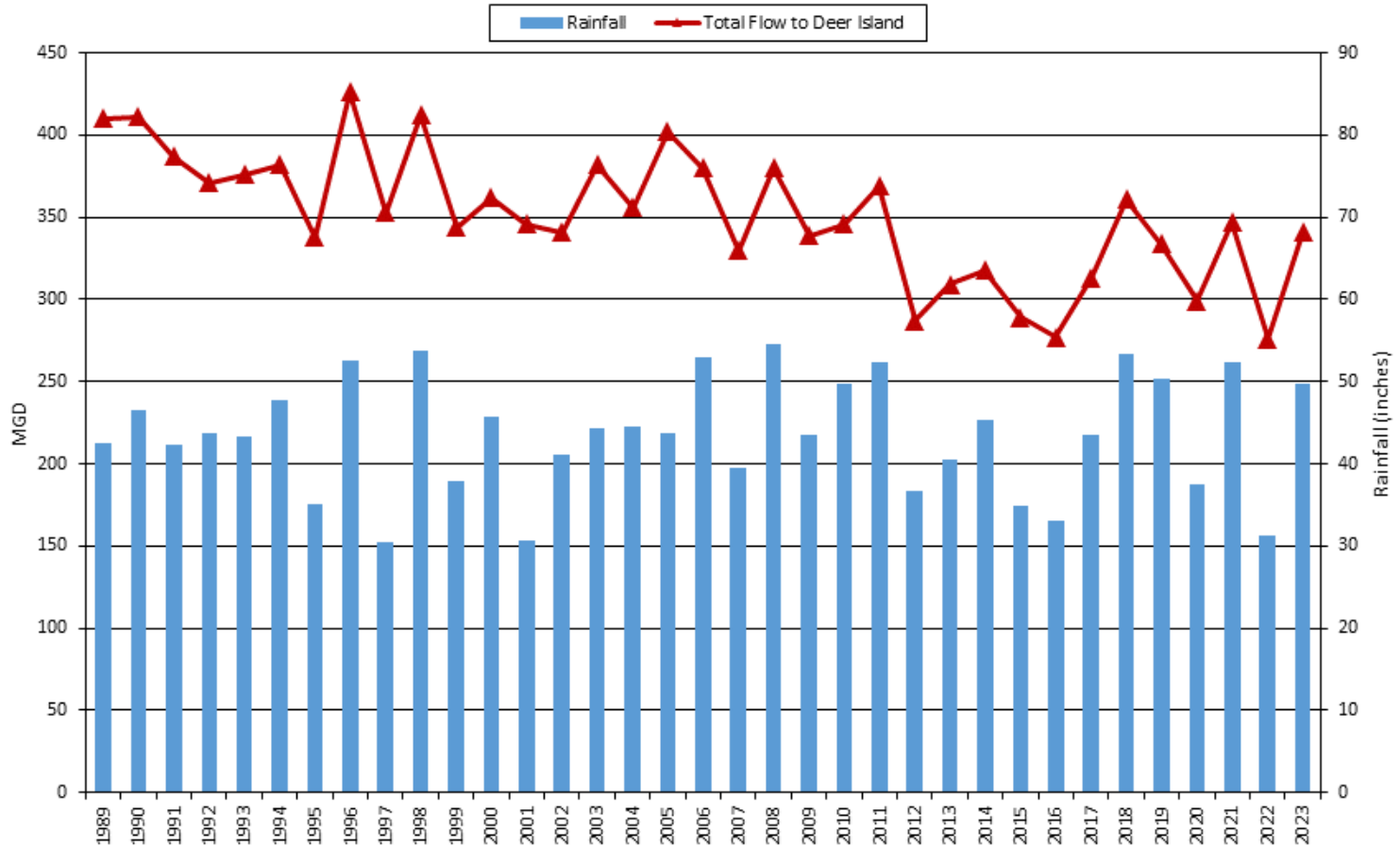
Next Steps and Questions

- Formalize criteria to assess new inquiries
- Convey unified message about constraints in the MWRA system and challenges facing wastewater communities
- I/I workshop in May:
 - Focus on private inflow removal
 - Funding options under I/I Local Financial Assistance Program
 - Looking for communities to present (contact Kristen Hall (Kristen.Hall@mwra.com))





Total Flow to DITP





5-year Running Averages at DITP

